

## Copper bond earth rod

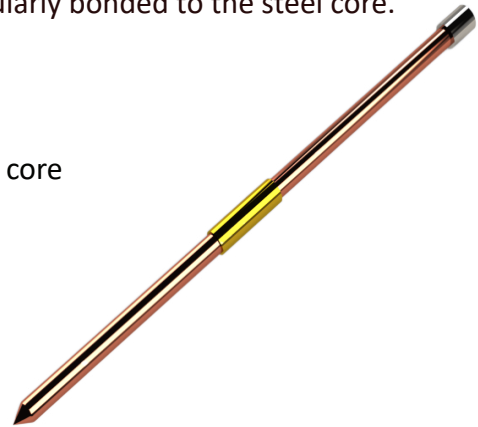
**Code:** AGR-SCU

### ▶ Product Information:

Copper bond Earth Rods, deep driven, usually provide the most cost-effective earth system. They are made from low carbon, high tensile strength (minimum 600n/mm<sup>2</sup>) steel core with a coating of 99.9% pure electrolytic copper, that has been molecularly bonded to the steel core.

### ▶ Features:

Material: Pure copper molecularly bonded on to a steel core  
Standard: UL 467, IEC 62561

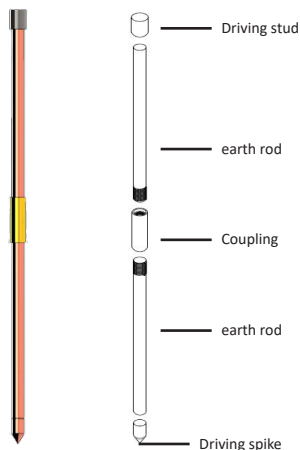


### ▶ More Information:

Extendable type rods have a rolled thread (UNC2A) at each end. Rolled threads have a higher strength than cut threads. Additionally, they preserve the copper coating over the threaded sections thus improving corrosion resistance.

An Earth Termination Network must:

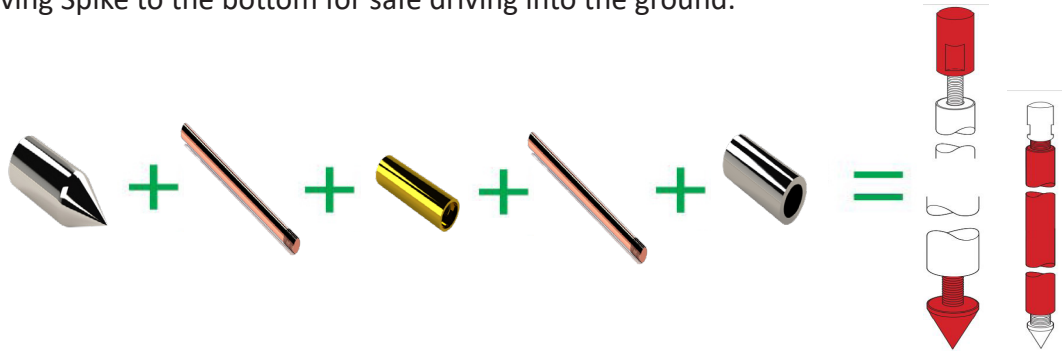
- protect life,
- provide a low resistivity path to earth,
- allow circuit protection devices to operate correctly,
- carry high currents repeatedly,
- have excellent corrosion resistance properties, and
- be mechanically robust.



PART NUMBER	LENGTH(mm)	DIAMETER(mm)	BODY DIAMETER(mm)	MATERIAL
AGR-SCU 16/1200	1200	16	14.2	COPPER
AGR-SCU 16/1500	1500	16	14.2	
AGR-SCU 16/2000	2000	16	14.2	
AGR-SCU 20/1200	1200	20	17.2	
AGR-SCU 20/1500	1500	20	17.2	
AGR-SCU 20/2000	2000	20	17.2	

## ► Assembly:

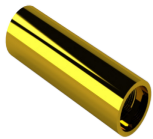
Assemble Earth Rods to the desired length with dowel and add a Driving Stud to the top and a Driving Spike to the bottom for safe driving into the ground.



## ► accessories of earth rods

### Coupler

Code: ACP



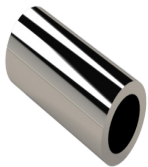
These fasteners are made of copper alloy with high corrosion resistance and strength and also prevent the threads from being damaged when hammering the earth rod.

Standard: IEC 62561

PART NUMBER	THEARD SIZE <sub>(inch)</sub>	ROD DIAMETER <sub>(mm)</sub>
ACP 16	5/8	16
ACP 20	3/4	20

### Cup hiter

Code: ASC



In order to easily crush and prevent damage to the threads of hard copper earth rod and stainless steel earth rod, a cup shock absorber made of high-strength heat-treated steel is used.

Standard: BS 970

PART NUMBER	ROD DIAMETER <sub>(mm)</sub>
ASC 16	16
ASC 20	20

### Steel tip

Code: AST1



Made of high-strength heat-treated steel, which is used for easy crushing and to prevent damage to the earth rod threads.

Standard: BS 970

PART NUMBER	THEARD SIZE <sub>(inch)</sub>	ROD DIAMETER <sub>(mm)</sub>
AST1-16	5/8	16
AST1-20	3/4	20