

# Technical data sheet

## Medium and fine protection FRD 2 for two-core systems 24 V

Item no. 5098727



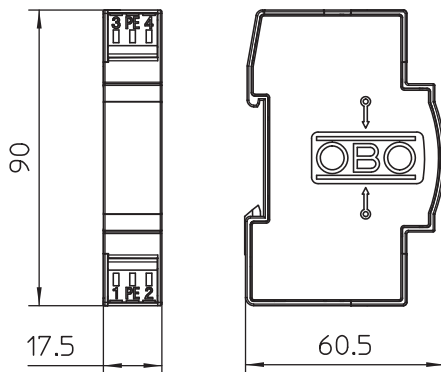
Surge protection for use in measurement and control technology

- Medium and fine protection
- Standard design for double core systems
- Two-stage protection circuit
- With installation-friendly, screwless connection terminals
- In space-saving 17.5 mm grid
- With ohmic decoupling in the longitudinal branch

Application: Universal use on any 35 mm DIN profile rail in every commercially available distributor housing.



### Dimensions



### Master data

Item no.	5098727
Type	FRD 2-24
Description 1	Lightning barrier
Description 2	with decoupling resistance
Dimension	24V AC
Smallest sales unit (VG)	1,00 Piece
Weight	5,10 kg/100 pc.

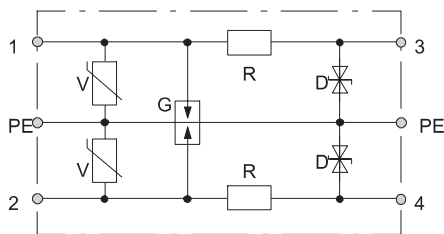
# Technical data sheet

## Medium and fine protection FRD 2 for two-core systems 24 V

Item no. 5098727



### Technical data



Arrestor monitoring	<input type="checkbox"/>
Category	Type 2+3 / C2+C1
SPD to IEC 61643-21	Class II/III / C2+C1
Connection cross-section, flexible	0,14 - 2,50 mm <sup>2</sup>
Connection cross-section, multi-wire	0,14 - 2,50 mm <sup>2</sup>
Connection cross-section, rigid	0,14 - 2,50 mm <sup>2</sup>
Number of poles	2,00
Insertion loss	3 dB @ 1 MHz dB
Earthing via:	Terminal
Explosion-tested version	<input type="checkbox"/>
Telecommunications contact	<input type="checkbox"/>
Total discharge current (8/20)	5 kA
Maximum continuous voltage AC	19,00 V
Maximum continuous voltage DC	28,00 V
Insulation resistance	>10 MΩ
Nominal discharge current (8/20 μs)	2,50 kA
Capacity (wire-wire)	<10 nF
Capacity (wire-earth)	<10 nF
Lightning protection zone LPZ	1→3
Nominal voltage	24,00 V
Rated current	0,20 A
Nominal load current AC	0,14 A
Nominal load current DC	0,20 A
Installation type	DIN rail 35 mm
Testing standard	IEC 61643-21
Shielding connection available	No
Protection rating	IP20
Protection level wire-wire	<120 V
Protection level wire-earth	<60 V
Series resistance per wire	15 Ω ± 10 %
Connection system	Terminal
Impulse durability wire-wire	C2: 5 kV / 2,5 kA (8/20μs)
Impulse durability wire-earth	C2: 5 kV / 2,5 kA (8/20μs)
Temperature range	-40+80 °C
Division unit TE (17.5 mm)	1